



Viewer Details

May 25, 2010

Contents

1	Introduction	5
2	Viewer Issues	5
2.1	V00019 – Native Time Zone	8
2.2	V00018 – Email headers BCC.....	8
2.3	V0017 – Invalid MHT Files Render as Text Files	9
2.4	V0016 - PDFs with JBIG2 compression.....	9
2.5	V0015 - Email dates and time.....	9
2.6	V0014 - Highlighting may shift positions.....	9
2.7	V0013 – Terms at the end of a Lines.....	9
2.8	V0012 – Keyword Hit Highlights Removed.....	10
2.9	V0011 – MS Word Headers	10
2.10	V0010 – Right to Left Languages – Tiffing	10
2.11	V0009 – Right to Left Languages – Viewing	10
2.12	V0008 - Empty Sheets	10
2.13	V0007 - Excel Hidden or Very Hidden Sheets.....	10
2.14	V0006 - Outlook Email Meeting Requests.....	11
2.15	V0005 - Outlook Email Headers.....	11
2.16	V0004 – PDFs	14
2.17	V0003 - Office Tracked Changes and Comments.....	14
2.18	V0002 - Embedded files	15
2.19	V0001 – Autodates	16
2.20	Questions	17
3	Supported File Types – Viewer v8.2 and Lower	18
3.1	Word Processing	18
3.2	Desktop Publishing	21

3.3	Database.....	22
3.4	Spreadsheet.....	23
3.5	Presentations.....	25
3.6	Graphics	25
3.7	Compressed.....	29
3.8	Email.....	29
3.9	MIME Support Notes	30
3.10	Other Formats	30
4	Supported File Types – Viewer v8.3.0 – v8.3.1	32
4.1	Archives.....	32
4.2	Database.....	32
4.3	Email.....	33
4.4	Presentation	34
4.5	Images	35
4.6	Spreadsheet.....	38
4.8	Text	41
4.9	Vector Image	42
4.10	Word Processing.....	46
4.11	Other Formats	53
5	Supported File Types – Viewer v8.3.2	55
5.1	Archives.....	55
5.2	Database.....	55
5.3	Email.....	56
5.4	Presentation	57
5.5	Images	58
5.6	Spreadsheet.....	60
5.7	Text	62
5.8	Vector Image	63

5.9	Word Processing.....	65
5.10	Other.....	68
6	Disclaimer.....	69

1 Introduction

Relativity uses a program called Outside In – provided by Oracle – to display rendered versions of native files within the viewer. This allows reviewers to see how the file looked in its native application without needing to open the file in that native application.

The Outside In viewer supports hundreds of file types, all listed in this document. But since it is rendering the native file – not actually using the native application – some parts of the file may not display correctly.

This document is intended to:

- Keep you up to date on current issues with the viewer.
- List the file types supported by Outside In.

If you have questions not answered by this document, please contact support@kcura.com

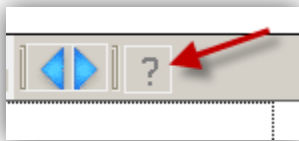
2 Viewer Issues

As we learn of new issues with the viewer, we will post them to this list, and send an email informing Relativity Administrators of the new issue.

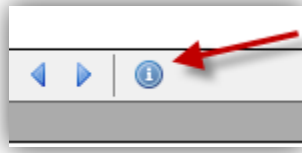
Each new issue will be given a number, found on the below index, sorted from most recent to oldest. Details for each issue will follow below the index, in the same order.

While some of these issues may simply explain how the viewer works, others are issues that will be resolved by Relativity service releases. When these service releases becomes available, we will add that information to this document and contact Relativity Administrators.

You can check your current viewer's version by clicking on the "?" icon in the viewer toolbar.



Web Client Viewer Version 5.09 and earlier



Web Client Viewer Version 6.2 and higher

Issue #	Date Posted	Description	Resolved in Version...	Available on...
V0019	10.20.09	Native Time Zone Offset is lost when switching from Viewer mode to Extracted Text mode, then back to viewer mode	5.06.440.1	10.31.09
V0018	10.20.09	Email headers BCC, Importance, and Severity are hidden in Draft and Preview viewer modes	5.06.440.1	10.31.09
V0017	07.09.09	Invalid MHT files may render as text files		
V0016	07.09.09	PDFs with JBIG2 compression are not fully supported		
V0015	07.09.09	Email header date and time may show sent date in one mode and received date in another	5.00.259.9	05.01.09
V0014	07.09.09	Highlighting may shift positions depending on the	5.00.259.9	05.01.09

Issue #	Date Posted	Description	Resolved in Version...	Available on...
		display mode		
V0013	07.09.09	Lines ending with a dash cannot be highlighted		
V0012	04.02.09	Keyword hit highlighting removed by browsing through hits	4.20.315.2	04.03.09
V0011	04.02.09	MS Word headers only visible in Preview mode.		
V0010	03.19.09	Right to left languages - tiffing	4.20.296.4	03.13.09
V0009	03.19.09	Right to left languages - viewing	4.20.296.4	03.13.09
V0008	02.19.09	Excel Empty Sheets		
V0007	02.19.09	Excel Hidden or Very Hidden Sheets	Viewer - 8.3*	03.02.09
V0006	02.19.09	Outlook Meeting Requests	Viewer- 8.3*	03.02.09
V0005	12.18.08	Outlook Email Headers	Viewer- 8.3*	03.02.09
V0004	12.18.08	PDFs		
V0003	12.18.08	Office Tracked Changes		

Issue #	Date Posted	Description	Resolved in Version...	Available on...
V0002	12.18.08	Embedded Files		
V0001	12.18.08	Autodates		

Viewer Issues

*Note – the 8.3 viewer is available beginning with Relativity 4.20.281.1

2.1 V00019 – Native Time Zone

This issue is resolved by the new viewer available in Relativity 5.06.440.1, available October 31, 2009. This viewer may require a manual installation.

If you are on a previous version of Relativity, you can install the 5.06 viewer to resolve this issue. The viewer is backward and forward compatible.

If a document's Native Time Zone Offset was set, it would appear correctly in Viewer mode. If the view was switched to Extracted Text and back to Viewer mode, the Native Time Zone Offset would be lost.

2.2 V00018 – Email headers BCC

This issue is resolved by the new viewer available in Relativity 5.06.440.1, available October 31, 2009. This viewer may require a manual installation.

If you are on a previous version of Relativity, you can install the 5.06 viewer to resolve this issue. The viewer is backward and forward compatible.

Previously, email BCC, Importance, and Severity were only shown in Preview mode. With the fix applied, the email headers BCC, Importance and Severity are shown in all three modes: Draft, Normal, and Preview.

2.3 V0017 – Invalid MHT Files Render as Text Files

MHT files are web page archives saved with IE, formatting using MIME HTML – or “MHTML”. kCura has seen several 8 bit MHT files with a signature that Oracle identifies as a UTF8 text format, as opposed to an MHTML file. Accordingly, all HTML tags will be shown in text format, instead of rendered.

This problem is being researched by the Oracle team. Until a resolution is found, kCura can provide a workaround for these files, whereby the Byte Order Mark of the file is altered so that Oracle identifies the files as MIME encoded. For more information, contact support@kcura.com.

2.4 V0016 - PDFs with JBIG2 compression

The viewer does not yet fully support PDFs with JBIG2 compression. Oracle plans to include this in a unspecified future release.

For PDFs rendering problematically, use Native mode.

2.5 V0015 - Email dates and time

This issue was resolved in Relativity 5.00.259.9, available May 1, 2009. With the fix applied, the viewer always shows sent date. Contact support@kcura.com to schedule a deployment for your environment.

The date and time for emails is shown in the header. In Draft and Normal mode, this date was the received date. In Preview mode, it was shown as sent date.

2.6 V0014 - Highlighting may shift positions

This issue was resolved in Relativity 5.00.259.9, available May 1, 2009. Contact support@kcura.com to schedule a deployment for your environment.

In certain instances, a highlight applied in one mode might show as shifted a few characters for the left or the right when shown in a different mode.

2.7 V0013 – Terms at the end of a Lines

Within a .doc file, there is a potential for a line to end with a dash – “-“. The term at the end of the line that contains the dash cannot be highlighted.

For example:

“This is a line that ends with a dash-“

In the above example, the word dash could not be highlighted in normal or preview mode.

2.8 V0012 – Keyword Hit Highlights Removed

This issue was resolved in Relativity 4.20.315.2, available April 3, 2009. Contact support@kcura.com to schedule a deployment for your environment.

As you use keyword hit browsing arrows to navigate through hits in the 8.3 viewer, the hit highlighting for browsed terms will disappear. Reloading the document will re-show all keyword hit highlights.

Persistent highlighting is not affected.

2.9 V0011 – MS Word Headers

Microsoft Word headers and footers only show in Preview mode, not in Draft or Normal mode.

2.10 V0010 – Right to Left Languages – Tiffing

This issue was resolved in Relativity 4.20.303, available March 19, 2009. Contact support@kcura.com to schedule a deployment for your environment.

Languages that read right to left, such as Hebrew and Arabic may render correctly in the viewer, but tiff incorrectly. In the tiffed version, the characters may read from left to right instead of right to left.

2.11 V0009 – Right to Left Languages – Viewing

This issue was resolved in the 8.3 viewer. The 8.3 viewer can be added beginning with Relativity 4.20.281.1 or later, available beginning March 2, 2009. If you are on a previous version, you will encounter the below behavior. Contact support@kcura.com to schedule a deployment for your environment.

Languages that read right to left, such as Hebrew and Arabic may render incorrectly in the viewer, reading from left to right instead of right to left.

2.12 V0008 - Empty Sheets

Empty sheets within an Excel file will not be shown in the viewer.

2.13 V0007 - Excel Hidden or Very Hidden Sheets

This issue was resolved in the 8.3 viewer. The 8.3 viewer can be added beginning with Relativity 4.20.281.1 or later, available beginning March 2, 2009. If you are on a previous version, you will encounter the below behavior. Contact support@kcura.com to schedule a deployment for your environment.

Worksheets within Excel can be designated as “Hidden” or “Very Hidden.” Hidden sheets are not shown in Excel, but can be unhidden in Excel’s menu bar. Very Hidden sheets are also not shown in Excel, and can only be unhidden in from VBA (Visual Basic for Applications).

Hidden and Very Hidden sheets are not shown in the viewer. However, in some instances, the viewer’s tiffing tools will create tiffs of those Hidden or Very Hidden sheets. In those instances, your tiffs may contain data that is not shown in the viewer.

There is no discernible pattern for which files hidden sheets will be tiffed, and which will not. If you tiff your Excel files within Relativity, your processing department or vendor may be able to programmatically identify which files have Hidden or Very Hidden sheets. For those files, you can run a quality check to ensure only the expected information is tiffed. Additionally, you can disable the tiffing of Excel files on a case by case basis from the Case Details tab.

2.14 V0006 - Outlook Email Meeting Requests

This issue was resolved in the 8.3 viewer. The 8.3 viewer can be added beginning with Relativity 4.20.281.1 or later, available beginning March 2, 2009. If you are on a previous version, you will encounter the below behavior. Contact support@kcura.com to schedule a deployment for your environment.

The header information of email meeting requests is occasionally truncated when seen in the viewer, and accordingly, in tiffs created in the viewer. There is no discernible pattern for when the truncation occurs.

Oracle is working on a patch to correct this. As soon as it is available, we will create a service release and inform Relativity Administrators.

Until that point, it is suggested that you view meeting request’s metadata in a layout to ensure that you are not missing any potentially truncated data.

2.15 V0005 - Outlook Email Headers

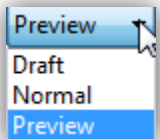
This issue was resolved in the 8.3 viewer. The 8.3 viewer can be added beginning with Relativity 4.20.281.1 or later, available beginning March 2, 2009. If you are on a previous version, you will encounter the below

behavior. Contact support@kcura.com to schedule a deployment for your environment.

Emails can be viewed in three different modes, controlled by the below options in the viewer toolbar.



Email view mode Web Client version 5.09 and lower

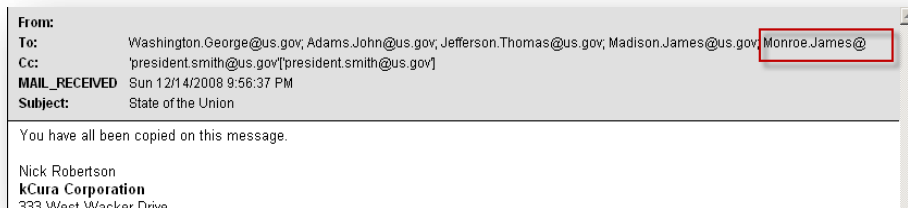


Email view mode Web Client version 6.02 and higher

Regardless of mode selection, all dates and times will be displayed in GMT format. This has not changed for version 4.20.281.1. This will be corrected in the next major Relativity release.

By default, emails are shown in Draft mode. Draft mode is the most readable, allowing you to incrementally zoom in or out. When viewing an email in either Draft or Normal mode, email header information does not wrap when it reaches the edge of the viewer. Header information includes From, To, CC, BCC, Date, and Subject information.

For example, the below email was addressed to all US presidents. Note that the line ends, and does not wrap, at “monroe,james@”



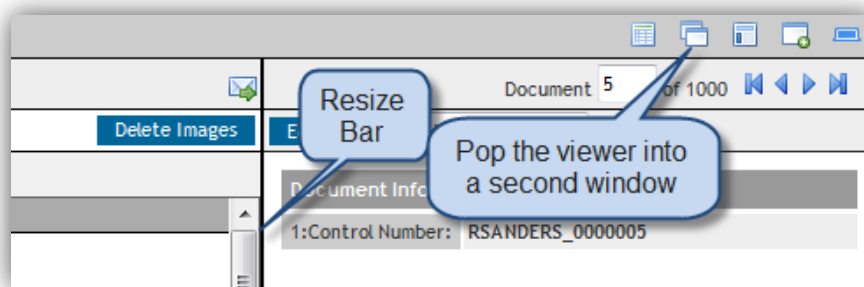
Email Header Information

There is no set number of characters that will be displayed. The number of characters displayed is based on:

- Each reviewer's screen resolution
- The size of the viewer pane, which can be adjusted on the fly

The below screenshot shows the ways the viewer pane can be adjusted.

- The viewer pane can be resized by dragging the thick black vertical resize bar.
- The viewer can be popped out into a second window, allowing you to see more information.



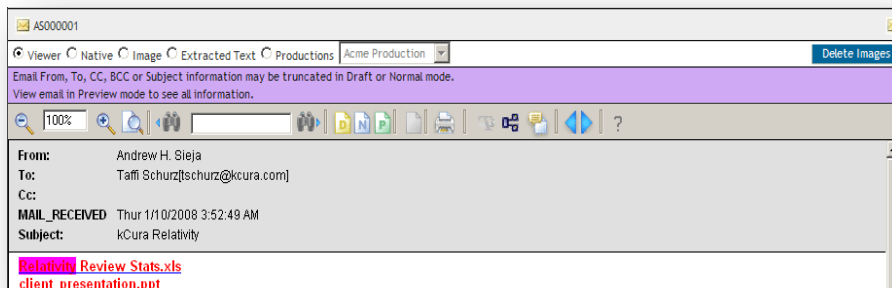
Viewer Pane Adjustment

Resizing the viewer area may allow you to see all header information. If it does not, you can switch to Preview mode. Preview mode shows the email in a "print preview" format, but does not allow you to incrementally zoom in or out on your page. It does, however, wrap header lines, allowing you to see all To, From, CC, BCC, Date, and Subject information.



Email Subject Information

To help reduce confusion, Relativity displays a purple information bar on all email messages – and only email messages – informing reviewers of the potential issue. It suggests that they switch to Preview mode to see all email header information.



Email Information Bar

2.16 V0004 – PDFs

PDF files that display clearly in Adobe Acrobat may render poorly in the viewer. There are many potential reasons for this. Adobe Acrobat has tools built in to correct variances in PDF files. These correction tools are not available in external viewers.

If you are having trouble viewing PDFs in the viewer, you may need to view the PDFs in the “Native” viewer mode.

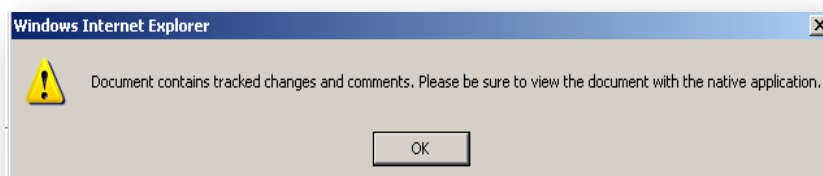
2.17 V0003 - Office Tracked Changes and Comments

Tracked changes and comments are used in Microsoft Office to allow collaborative editing. More information can be found at the below link:

<http://office.microsoft.com/en-us/word/HP052416341033.aspx?pid=CH063555981033>

Tracked changes and comments cannot be displayed in the viewer. Reviewers will need to view the document in the “Native” viewer mode.

To help inform reviewers of documents with tracked changes and comments, Relativity can be configured to throw custom HTML alerts.



Tracked Changes Alert

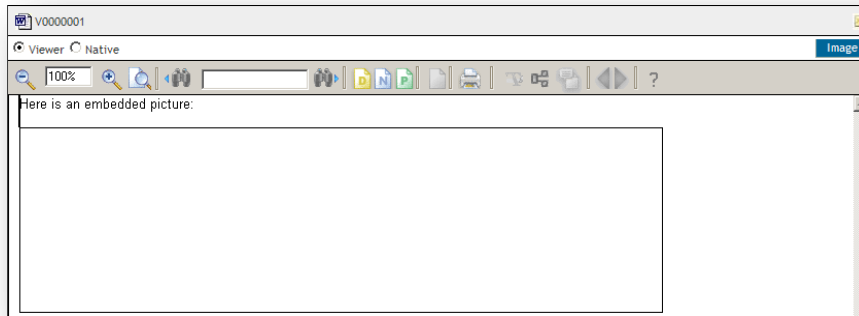
These alerts are not created automatically. They must be set up by a Relativity Case Administrator, and are reliant upon the electronic data discovery processing software detecting this embedded data. The alert will be based on an imported field of metadata indicating that the record has tracked changes or comments.

For more information on how to throw an HTML alert script, see the Relativity Administrative Manual, page 32.

2.18 V0002 - Embedded files

Embedded files are files contained within other files. For example, someone may paste a JPG picture into a Microsoft Word document. Embedded files can be displayed in some modes within the viewer.

The below screenshots show a MS Word document with an embedded picture. In Draft mode, there is a placeholder for the embedded file, but it is not viewable.



Draft Mode

In Normal and Preview modes, the embedded file is viewable as part of the Word file.



Normal and Preview Modes

2.19 V0001 – Autodates

Autodates are essentially mini-code inserted into a Microsoft Office file to display a predetermined, updating date or time.

For example, you could put an autodate at the end of a Word document that says “This document was last edited on <autodate>”, substituting the appropriate autodate for <autodate>. Then, anytime anyone saved the file, the sentence would be updated and true.

Autodates are displayed in the viewer. However, autodates are indistinguishable from the rest of the document’s text.

Any autodates will be displayed as they were the last time the document was opened. For example, an autodate to display “today’s date” would show the date the document was last opened and saved.

Autodates are not altered once loaded into Relativity's file repository. Users viewing documents will have the same date displayed throughout the review.

2.20 Questions

If you have any questions not answered by this document please contact support@kcura.com.

3 Supported File Types – Viewer v8.2 and Lower

Below is the full list of file types supported by the viewer, as listed by Oracle. This list applies for the viewer 8.2 or lower.

3.1 Word Processing

ANSI Text	7 & 8 bit
ASCII Text	7 & 8 bit
DEC WPS Plus (DX)	Versions through 3.1
DEC WPS Plus (WPL)	Versions through 4.1
DisplayWrite 2 & 3 (TXT)	All versions
DisplayWrite 4 & 5	Versions through 2.0
EBCDIC	All versions
Enable	Versions 3.0, 4.0 and 4.5
First Choice	Versions through 3.0
Framework	Version 3.0
Hangul	Versions 97, 2002 and 2005
IBM FFT	All versions
IBM Revisable Form Text	All versions
IBM Writing Assistant	Version 1.01

Just System Ichitaro	Versions 4.x through 6.x, 8.x through 13.x and 2004
JustWrite	Versions through 3.0
Legacy	Versions through 1.1
Lotus AMI/AMI Professional	Versions through 3.1
Lotus Manuscript	Version 2.0
Lotus Word Pro (non-Windows)	Versions SmartSuite 97, Millennium, and Millennium 9.6 (text only)
Lotus Word Pro (Windows)	Versions SmartSuite 96, 97 and Millennium and Millennium 9.6
MacWrite II	Version 1.1
MASS11	Versions through 8.0
Microsoft Rich Text Format (RTF)	All versions
Microsoft Word (DOS)	Versions through 6.0
Microsoft Word (Mac)	Versions 4.0 – 2004
Microsoft Word (Windows)	Versions through 2007
Microsoft WordPad	All versions
Microsoft Works (DOS)	Versions through 2.0
Microsoft Works (Mac)	Versions through 2.0
Microsoft Works (Windows)	Versions through 4.0

Microsoft Windows Write	Versions through 3.0
MultiMate	Versions through 4.0
Navy DIF	All versions
Nota Bene	Version 3.0
Novell Perfect Works	Version 2.0
Novell/Corel WordPerfect (DOS)	Versions through 6.1
Novell/Corel WordPerfect (Mac)	Versions 1.02 through 3.0
Novell/Corel WordPerfect (Windows)	Versions through 12.0
Office Writer Versions	4.0 - 6.0
OpenOffice Writer (Windows and UNIX)	OpenOffice version 1.1 and 2.0
PC-File Letter	Versions through 5.0
PC-File+ Letter	Versions through 3.0
PFS:Write	Versions A, B and C
Professional Write (DOS)	Versions through 2.1
Professional Write Plus (Windows)	Version 1.0
Q&A (DOS)	Version 2.0

Q&A Write (Windows)	Version 3.0
Samna Word	Versions through Samna Word IV+
Signature	Version 1.0
SmartWare II	Version 1.02
Sprint	Versions through 1.0
StarOffice Writer	Version 5.2 (text only) and 6.x through 8.x
Total Word	Version 1.2
Unicode Text	All versions
UTF-8	All versions
Volkswriter 3 & 4	Versions through 1.0
Wang PC (IWP)	Versions through 2.6
WordMARC	Versions through Composer Plus
WordStar (DOS)	Versions through 7.0
WordStar (Windows)	Version 1.0
WordStar 2000 (DOS)	Versions through 3.0
XyWrite	Versions through III Plus

3.2 Desktop Publishing

Adobe FrameMaker (MIF)	Versions 3.0, 4.0, 5.0, 5.5 and 6.0 and Japanese 3.0, 4.0, 5.0 and 6.0 (text
-------------------------------	--

	only)
--	-------

3.3 Database

Access	Versions through 2.0
dBASE	Versions through 5.0
DataEase	Version 4.x
dBXL	Version 1.3
Enable	Versions 3.0, 4.0 and 4.5
First Choice	Versions through 3.0
FoxBase	Version 2.1
Framework	Version 3.0
Microsoft Works (Windows)	Versions through 4.0
Microsoft Works (DOS)	Versions through 2.0
Microsoft Works (Mac)	Versions through 2.0
Paradox (DOS)	Versions through 4.0
Paradox (Windows)	Versions through 1.0
Personal R:BASE	Version 1.0
R:BASE 5000	Versions through 3.1
R:BASE System V	Version 1.0

Reflex	Version 2.0
Q & A	Versions through 2.0
SmartWare II	Version 1.02

3.4 Spreadsheet

Enable	Versions 3.0, 4.0 and 4.5
First Choice	Versions through 3.0
Framework	Version 3.0
Lotus 1-2-3 (DOS & Windows)	Versions through 5.0
Lotus 1-2-3 (OS/2)	Versions through 2.0
Lotus 1-2-3 Charts (DOS & Windows)	Versions through 5.0
Lotus 1-2-3 for SmartSuite	Versions 97 - Millennium 9.6
Lotus Symphony	Versions 1.0, 1.1 and 2.0
Mac Works	Version 2.0
Microsoft Excel Charts	Versions 2.x - 7.0
Microsoft Excel (Mac)	Versions 3.0 – 4.0, 98, 2001, 2002, 2004, and v.X
Microsoft Excel (Windows)	Versions 2.2 through 2007
Microsoft Multiplan	Version 4.0

Microsoft Works (Windows)	Versions through 4.0
Microsoft Works (DOS)	Versions through 2.0
Microsoft Works (Mac)	Versions through 2.0
Mosaic Twin	Version 2.5
Novell Perfect Works	Version 2.0
PFS:Professional Plan	Version 1.0
Quattro Pro (DOS)	Versions through 5.0 (text only)
Quattro Pro (Windows)	Versions through 12.0 (text only)
SmartWare II	Version 1.02
StarOffice/OpenOffice Calc (Windows and UNIX)	StarOffice versions 5.2 (text only) through 8.x and OpenOffice version 1.1 and 2.0
SuperCalc 5	Version 4.0
VP Planner 3D	Version 1.0

3.5 Presentations

Corel/Novell Presentations	Versions through 12.0
Harvard Graphics (DOS)	Versions 2.x & 3.x
Harvard Graphics (Windows)	Windows versions
Freelance (Windows)	Versions through Millennium 9.6
Freelance (OS/2)	Versions through 2.0
Microsoft PowerPoint (Windows)	Versions 3.0 through 2007
Microsoft PowerPoint (Mac)	Versions 4.0 through v.X
StarOffice/OpenOffice Impress (Windows and UNIX)	StarOffice versions 5.2 (text only) and 6.x through 8.x (full support) and OpenOffice version 1.1 and 2.0 (text only)

3.6 Graphics

Adobe Photoshop (PSD)	Version 4.0
Adobe Illustrator	Versions 7.0 and 9.0
Adobe FrameMaker graphics	(FMV) Vector/raster through 5.0
Adobe Acrobat (PDF)	Versions 1.0, 2.1, 3.0, 4.0, 5.0, 6.0 and 7.0 (including Japanese PDF)
Ami Draw (SDW)	Ami Draw
AutoCAD Interchange and Native Drawing formats (DXF and DWG)	AutoCAD Drawing Versions 2.5 - 2.6, 9.0 - 14.0, 2000i and 2002

AutoShade Rendering (RND)	Version 2.0
Binary Group 3 Fax	All versions
Bitmap (BMP, RLE, ICO, CUR, OS/2 DIB & WARP)	All versions
CALS Raster (GP4)	Type I and Type II
Corel Clipart format (CMX)	Versions 5 through 6
Corel Draw (CDR)	Versions 3.x - 8.x
Corel Draw (CDR with TIFF header)	Versions 2.x -
Computer Graphics Metafile (CGM)	ANSI, CALS NIST version 3.0
Encapsulated PostScript (EPS)	TIFF header only
GEM Paint (IMG)	All versions
Graphics Environment Mgr (GEM)	Bitmap & vector
Graphics Interchange Format (GIF)	All versions
Hewlett Packard Graphics Language (HPGL)	Version 2
IBM Graphics Data Format (GDF)	Version 1.0
IBM Picture Interchange Format (PIF)	Version 1.0
Initial Graphics Exchange Spec (IGES)	Version 5.1

JBIG2	JBIG2 graphic embeddings in PDF files
JFIF (JPEG not in TIFF format)	All versions
JPEG (including EXIF)	All versions
Kodak Flash Pix (FPX)	All versions
Kodak Photo CD (PCD)	Version 1.0
Lotus PIC	All versions
Lotus Snapshot	All versions
Macintosh PICT1 & PICT2	Bitmap only
MacPaint (PNTG)	All versions
Micrografx Draw (DRW)	Versions through 4.0
Micrografx Designer (DRW)	Versions through 3.1
Micrografx Designer (DSF)	Windows 95, version 6.0
Novell PerfectWorks (Draw)	Version 2.0
OS/2 PM Metafile (MET)	Version 3.0
Paint Shop Pro 6 (PSP)	Windows only, versions 5.0-6.0
PC Paintbrush (PCX and DCX)	All versions
Portable Bitmap (PBM)	All versions
Portable Graymap (PGM)	No specific version

Portable Network Graphics (PNG)	Version 1.0
Portable Pixmap (PPM)	No specific version
Postscript (PS)	Levels 1-2
Progressive JPEG	No specific version
Sun Raster (SRS)	No specific version
StarOffice/OpenOffice Draw for Windows and UNIX	StarOffice versions 5.2 (text only) through 8.x and OpenOffice version 1.1 and 2.0
TIFF	Versions through 6
TIFF CCITT Group 3 & 4	Versions through 6
Truevision TGA (TARGA)	Version 2
Visio (preview)	Version 4
Visio	Versions 5, 2000, 2002 and 2003
WBMP	No specific version
Windows Enhanced Metafile (EMF)	No specific version
Windows Metafile (WMF)	No specific version
WordPerfect Graphics (WPG & WPG2)	Versions through 2.0
X-Windows Bitmap (XBM)	x10 compatible
X-Windows Dump (XWD)	x10 compatible

X-Windows Pixmap (XPM)	x10 compatible
-------------------------------	----------------

3.7 Compressed

GZIP	
LZA Self Extracting Compress	
LZH Compress	
Microsoft Binder Versions 7.0-97	(conversion of files contained in the Binder file is supported only on Windows)
UUEncode	
UNIX Compress	
UNIX TAR	
ZIP	PKWARE versions through 2.04g

3.8 Email

Microsoft Outlook Folder (PST)	Microsoft Outlook Folder and Microsoft Outlook Offline Folder files versions 97, 98, 2000, 2002, 2003 and 2007
Microsoft Outlook Message (MSG)	Microsoft Outlook Message and Microsoft Outlook Form Template versions 97, 98, 2000, 2002, 2003 and 2007
MIME	MIME-encoded mail messages. (See "MIME Support Notes" immediately following this table for detailed information about

3.9 MIME Support Notes

Below is detailed information about our support for MIME-encoded mail message formats.

- MIME formats, including:
 - EML
 - MHT (Web Archive)
 - NWS (Newsgroup single-part and multi-part)
 - Simple Text Mail (defined in RFC 2822)
- TNEF Format
- MIME encodings, including:
 - base64 (defined in RFC 1521)
 - binary (defined in RFC 1521)
 - binhex (defined in RFC 1741)
 - btoa
 - quoted-printable (defined in RFC 1521)
 - utf-7 (defined in RFC 2152)
 - uue
 - xxe
 - yenc

Additionally, the body of a message can be encoded several ways. We support the following encodings:

- Text
- HTML
- RTF
- TNEF
- Text/enriched (defined in RFC1523)
- Text/richtext (defined in RFC1341)
- Embedded mail message (defined in RFC 822). This is handled as a link to a new message.

NOTE - The attachments of a MIME message can be stored in many formats. We process all attachments types that our technology supports.

3.10 Other Formats

HTML	Versions through 3.0, with some limitations
Macromedia Flash	Macromedia Flash 6.x, Macromedia Flash 7.x, and Macromedia Flash Lite (text only)
Microsoft Project	Versions 98 - 2003 (text only)
vCard, vCalendar	Version 2.1
Windows Executable	
WML	Version 5.2
XML	Text only
Yahoo! Instant Messenger	Versions 6.x, 7.x and 8.x

4 Supported File Types – Viewer v8.3.0 – v8.3.1

Below is the full list of file types supported by the viewer, as listed by Oracle. This list applies if you are using viewer versions 8.3.0 – 8.3.1

4.1 Archives

LZA Self Extracting Compress	
LZH Compress	
Microsoft Office Binder	95
Microsoft Office Binder	97
RAR	1.5, 2.0, 2.9
Self-extracting .exe	
UNIX Compress	
UNIX GZip	
UNIX tar	
Uencode	
Zip	PKZip, WinZip

4.2 Database

Database DataEase	4.x.
DBase	III, IV, V

First Choice DB	Through 3.0
Framework WP	3.0
Microsoft Access	1.0
Microsoft Access	2.0
Microsoft Works DB for DOS	2.0
Microsoft Works DB for Macintosh	2.0
Microsoft Works DB for Windows	3.0, 4.0
Microsoft Works WP for DOS	1.0
Paradox	2.0 - 4.0
Paradox for Windows.	through 1.0
Q&A Database	through 2.0
R:Base	R:Base 5000, R:Base System V
Reflex	2.0
SmartWare II DB	1.02

4.3 Email

Encoded mail messages	MHT
Encoded mail messages	Multi Part Alternative
Encoded mail messages	Multi Part Digest

Encoded mail messages	Multi Part Mixed
Encoded mail messages	Multi Part News Group
Encoded mail messages	TNEF
Microsoft Outlook Express	EML
Microsoft Outlook Forms Template	OFT
Microsoft Outlook MSG	MSG
Microsoft Outlook OST	OST
Microsoft Outlook PST	97
Microsoft Outlook PST	98
Microsoft Outlook PST	2000
Microsoft Outlook PST	2001 Mac
Microsoft Outlook PST	2002
Microsoft Outlook PST	2003

4.4 Presentation

Corel Presentations	6, 7, 8, 9, 10, 11, 12, X3
Harvard Graphics Presentation DOS Lotus Freelance	3.0
Lotus Freelance	1.0, 2.0, SmartSuite Millennium, SmartSuite Millennium 9.6

Lotus Freelance for OS/2	1.0, 2.0
Lotus Freelance for Windows 95	96, 97
Microsoft PowerPoint for Macintosh	4.0, 98, 2001, 2004, V.X
Novell Presentations	3.0, 7.0
OpenOffice Impress	1.1
OpenOffice Impress	2.0
StarOffice Impress	6.x
StarOffice Impress	7.x
StarOffice Impress	8.0
WordPerfect Presentations	

4.5 Images

CALS Raster (GP4)	Type I
CALS Raster (GP4)	Type II
Computer Graphics Metafile	ANSI, CALS NIST 3.0
Encapsulated PostScript (EPS)	TIFF header Only
GEM Image (Bitmap)	
Graphics Interchange Format (GIF)	
IBM Graphics Data Format (GDF)	1.0

IBM Picture Interchange Format	1.0
JBIG2	Graphic Embeddings in PDF
JFIF (JPEG not in TIFF format)	
JPEG	
JPEG 2000	JP2
Kodak Flash Pix	
Kodak Photo CD	1.0
Lotus PIC	
Lotus Snapshot	
Macintosh PICT	BMP only
Macintosh PICT2	BMP only
MacPaint	
Microsoft Windows Bitmap	
Microsoft Windows Cursor	
Microsoft Windows Icon	
OS/2 Bitmap	
OS/2 Warp Bitmap	
Paint Shop Pro (Win32 only)	5.0

Paint Shop Pro (Win32 only)	6.0
PC Paintbrush (PCX)	
PC Paintbrush DCX (multi-page PCX)	
Portable Bitmap (PBM)	
Portable Graymap PGM	
Portable Network Graphics (PNG)	
Portable Pixmap (PPM)	
Progressive JPEG	
StarOffice Draw	8.0
StarOffice Draw	6.x
StarOffice Draw	7.x
Sun Raster	
TIFF	Group 5
TIFF	Group 6
TIFF CCITT Fax	Group 3
TIFF CCITT Fax	Group 4
TIFF CCITT Group 3 & 4	Versions through 6
TruVision TGA (Targa)	2.0

WBMP wireless graphics format	
Word Perfect Graphics	1.0
Word Perfect Graphics	2.0
Word Perfect Graphics	7.0
Word Perfect Graphics	8.0
Word Perfect Graphics	9.0
Word Perfect Graphics	10.0
X-Windows Bitmap	x10 compatible
X-Windows Dump	x10 compatible
X-Windows Pixmap	x10 compatible

4.6 Spreadsheet

Enable Spreadsheet	3.0
Enable Spreadsheet	4.0
Enable Spreadsheet	4.5
First Choice SS	through 3.0
Framework SS	3.0
Lotus 1-2-3	1.0
Lotus 1-2-3	2.0

Lotus 1-2-3	3.0
Lotus 1-2-3	4.0
Lotus 1-2-3	5.0
Lotus 1-2-3	SmartSuite 97
Lotus 1-2-3	SmartSuite Millennium
Lotus 1-2-3	SmartSuite Millennium 9.6
Lotus 1-2-3 Charts (DOS and Windows)	through 5.0
Lotus 1-2-3 for OS/2	2.0
Microsoft Excel Charts	2.x Chart
Microsoft Excel Charts	3.0 Chart
Microsoft Excel Charts	4.0 Chart
Microsoft Excel Charts	5.0 Chart
Microsoft Excel Charts	7.0 Chart
Microsoft Excel for Macintosh	98
Microsoft Excel for Macintosh	2001
Microsoft Excel for Macintosh	2004
Microsoft Excel for Macintosh	v.X
Microsoft Excel for Windows	2.x

Microsoft Excel for Windows	3.0
Microsoft Excel for Windows	4.0
Microsoft Excel for Windows	5.0
Microsoft Excel for Windows	95 (7.0)
Microsoft Excel for Windows	97 (8.0)
Microsoft Excel for Windows	2000
Microsoft Excel for Windows	2002 (XP)
Microsoft Excel for Windows	2003
Microsoft Excel for Windows	2007
Microsoft Excel for Windows (<i>File ID only</i>)	2007 Binary
Microsoft Works SS for DOS	2.0
Microsoft Works SS for Macintosh	2.0
Microsoft Works SS for Windows	3.0, 4.0
Multiplan	4.0
Novell PerfectWorks Spreadsheet	2.0
OpenOffice Calc	1.1
OpenOffice Calc	2.0
PFS: Plan	1.0

Quattro for DOS	
QuattroPro	5.0
QuattroPro	6.0
QuattroPro	7.0
QuattroPro	8.0
QuattroPro	9.0
QuattroPro	10.0
QuattroPro	11.0
QuattroPro	12.0
QuattroPro	X3
QuattroPro for DOS Smart Ware Spreadsheet SmartWare II SS	through 5.0 1.02
StarOffice Calc	5.2
StarOffice Calc	8.0
StarOffice Calc	6.x
StarOffice Calc	7.x
SuperCalc Symphony VP-Planner	1.0, 1.1, 2.0 1.0

4.8 Text

ANSI Text	7 and 8 bit
------------------	-------------

ASCII Text	7 and 8 bit
DOS character set	
EBCDIC	
HTML	1.0
HTML	2.0
HTML	3.2
IBM DCA/RFT Macintosh character set	
Rich Text Format (RTF) Unicode Text	3.0
Unicode Text	4.0
UTF-8	
XHTML	1.0
XML (<i>text only</i>)	

4.9 Vector Image

Adobe Illustrator (<i>XMP only</i>)	9.0
Adobe Illustrator (<i>XMP only</i>)	11 (Creative Suite 1)
Adobe Illustrator (<i>XMP only</i>)	12 (Creative Suite 2)
Adobe Illustrator (<i>XMP only</i>)	12.01 (Creative Suite 2)
Adobe Illustrator (<i>XMP only</i>)	13 (Creative Suite 3)

Adobe Illustrator (XMP only)	through 7
Adobe InDesign (XMP only)	3.0 (Creative Suite 1)
Adobe InDesign (XMP only)	4.0 (Creative Suite 2)
Adobe InDesign (XMP only)	5.0 (Creative Suite 3)
Adobe InDesign Interchange (XMP only)	
Adobe PDF	1.0 (Acrobat 1)
Adobe PDF	1.1 (Acrobat 2)
Adobe PDF	1.2 (Acrobat 3)
Adobe PDF	1.3 (Acrobat 4)
Adobe PDF	1.4 (Acrobat 5)
Adobe PDF	1.5 (Acrobat 6)
Adobe PDF	1.6 (Acrobat 7)
Adobe Photoshop (XMP only)	8.0 (Creative Suite 1)
Adobe Photoshop (XMP only)	9.0 (Creative Suite 2)
Adobe Photoshop (XMP only)	9.0.2 (Creative Suite 2)
Adobe Photoshop (XMP only)	10.0 (Creative Suite 3)
Adobe Photoshop	Version 4
Ami Draw	SDW

AutoCAD Drawing	2.5
AutoCAD Drawing	2.6
AutoCAD Drawing	9.0
AutoCAD Drawing	10.0
AutoCAD Drawing	11.0
AutoCAD Drawing	12.0
AutoCAD Drawing	13.0
AutoCAD Drawing	14.0
AutoShade Rendering	2.0
AutoCAD Drawing	2000i
AutoCAD Drawing	2002
AutoCAD Drawing	2004
AutoCAD Drawing	2005
AutoCAD Drawing	2006
AutoCAD Drawing	2007
Corel Draw	2.0
Corel Draw	3.0
Corel Draw	4.0

Corel Draw	5.0
Corel Draw	6.0
Corel Draw	7.0
Corel Draw	8.0
Corel Draw	9.0
Corel Draw Clipart	5.0
Corel Draw Clipart	7.0
Enhanced Metafile (EMF)	
Escher graphics	
FrameMaker Vector and Raster	
Graphics (FMV)	through 5.0
Gem File (Vector)	
Harvard Graphics Chart DOS	2.0
Harvard Graphics Chart DOS	3.0
Harvard Graphics for Windows	
HP Graphics Language	2.0
IGES Drawing	5.1, 5.2, 5.3
Micrografx Designer	Version 6

Micrografx Drawing Products	through 3.1
Novell PerfectWorks Draw	2.0
OpenOffice Draw	1.1
OpenOffice Draw	2.0
OS/2 PM Metafile	3.0
Visio	5.0
Visio	2000
Visio	2002
Visio	2003
Visio (Page Preview mode only WMF/EMF)	4
Windows Metafile	

4.10 Word Processing

Adobe FrameMaker (MIF only)	3.0
Adobe FrameMaker (MIF only)	4.0
Adobe FrameMaker (MIF only)	5.0
Adobe FrameMaker (MIF only)	5.5
Adobe FrameMaker (MIF only)	6.0
Adobe Illustrator Postscript	Level 2

Ami	
Ami Pro for OS2	
Ami Pro for Windows	2.0, 3.0
Adobe FrameMaker (MIF only) Adobe FrameMaker (MIF only) Adobe FrameMaker (MIF only) Adobe FrameMaker (MIF only) Adobe FrameMaker (MIF only)	3.0, 4.0, 5.0, 5.5, 6.0
Adobe Illustrator Postscript Ami	Level 2
Ami Pro for OS2	
Ami Pro for Windows DEC DX	2.0, 3.0 4.0
DEC DX DEC DX Plus Enable Word Processor	through 3.1 through 4.1 3.0
Enable Word Processor	4.0
Enable Word Processor	4.5
First Choice WP Framework WP	through 3 3.0
Hangul	97
Hangul	2002
Hangul	2005
Hangul	2007
IBM DCA/FFT	`
IBM DisplayWrite	2.0

IBM DisplayWrite	3.0
IBM DisplayWrite	4.0
IBM DisplayWrite	5.0
IBM Writing Assistant	1.01
Ichitaro	5.0
Ichitaro	6.0
Ichitaro	8.0
Ichitaro	9.0
Ichitaro	10.0
Ichitaro	11.0
Ichitaro	12.0
Ichitaro	13.0
Ichitaro	2004
JustWrite Legacy Lotus Manuscript Lotus WordPro	through 3.0 1.1 through 2.0 9.7
Lotus WordPro	96
Lotus WordPro	97
Lotus WordPro	97 - non Win32
Lotus WordPro	SmartSuite Millennium

Lotus WordPro	SmartSuite Millennium 9.6
Lotus WordPro non Win32	SmartSuite Millennium 9.6
Lotus WordPro non Win32	SmartSuite Millennium
MacWrite II	1.1
Mass 11 Microsoft Word for DOS	through 8.0 4.0
Microsoft Word for DOS	5.0
Microsoft Word for DOS	5.5
Microsoft Word for DOS	6.0
Microsoft Word for Macintosh	4.0
Microsoft Word for Macintosh	5.0
Microsoft Word for Macintosh	6.0
Microsoft Word for Macintosh	98
Microsoft Word for Macintosh	2001
Microsoft Word for Macintosh	2002
Microsoft Word for Macintosh	2004
Microsoft Word for Macintosh	v.X
Microsoft Word for Windows	1.0

Microsoft Word for Windows	2.0
Microsoft Word for Windows	6.0
Microsoft Word for Windows Microsoft Word for Windows Microsoft Word for Windows	95 (7.0) 97 (8.0) 2000
Microsoft Word for Windows	2003
Microsoft Word for Windows	2007
Microsoft Word for Windows Microsoft Word for Windows	2002 (XP) 98-J
Microsoft WordPad	
Microsoft Works WP for DOS	2.0
Microsoft Works WP for Macintosh	2.0
Microsoft Works WP for Windows	
Microsoft Write for Windows	3.0, 4.0 1.0
Microsoft Write for Windows	2.0
Microsoft Write for Windows	3.0
Microsoft Write for Windows MultiMate	through 3. 3.6
MultiMate	4.0
MultiMate	
MultiMate Advantage Navy DIF Nota Bene	2.0 3.0

Novell PerfectWorks Word Processor	2.0
OfficeWriter	4.0
OfficeWriter	5.0
OfficeWriter	6.0
OpenOffice Writer	1.1
OpenOffice Writer	2.0
PC File Doc	5.0
PFS: Write	A
PFS: Write	B
Professional Write for DOS	1.0, 2.0
Professional Write Plus for Windows	1.0
Q&A Write	2.0
Q&A Write	3.0
Samna Word	through IV+
Signature	1.0
SmartWare II WP	1.02
Sprint	through 1.0
StarOffice Writer	8.0

StarOffice Writer (<i>text only</i>)	5.2
StarOffice Writer	6.x
StarOffice Writer	7.x
Total Word	1.2
Volkswriter 3 and 4	through 1
Wang IWP	through 2.6
WordMarc	through Composer Plus
WordPerfect for DOS	4.2
WordPerfect for Macintosh	1.0
WordPerfect for Macintosh	2.0
WordPerfect for Macintosh	2.1
WordPerfect for Macintosh	2.2
WordPerfect for Macintosh	3.0
WordPerfect for Macintosh	3.1
WordPerfect for Windows	5.1
WordPerfect for Windows	5.2
WordPerfect for Windows	6.0
WordPerfect for Windows	7.0

WordPerfect for Windows	8.0
WordPerfect for Windows	9.0
WordPerfect for Windows	10.0
WordPerfect for Windows	11.0
WordPerfect for Windows	12.0
WordPerfect for Windows	X3
Wordstar 2000 for DOS	through 3.0
Wordstar for DOS	3.0
Wordstar for DOS	4.0
Wordstar for DOS	5.0
Wordstar for DOS	6.0
Wordstar for DOS	7.0
Wordstar for Windows	1.0
XyWrite	through III+

4.11 Other Formats

Microsoft Windows DLL	
Microsoft Windows Executable	
vCalendar	2.1

vCard	2.1
Yahoo! Messenger	6.X, 7.X, 8

5 Supported File Types – Viewer v8.3.2

Below is the full list of file types supported by the viewer, as listed by Oracle. This list applies if you are using viewer version 8.3.2.

5.1 Archives

Program/File Type	Type/Version
LZA Self Extracting Compress	
LZH Compress	
Microsoft Office Binder	95, 97
RAR	1.5, 2.0, 2.9
Self-extracting .exe	
UNIX Compress	
UNIX GZip	
UNIX tar	
Uuencode	
Zip	PKZip, WinZip

5.2 Database

Program/File Type	Type/Version
DataEase	4.x
DBase	III, IV, V

Program/File Type	Type/Version
First Choice DB	Through 3.0
Framework WP	3.0
Microsoft Access	1.0, 2.0
Microsoft Works DB for DOS	2.0
Microsoft Works DB for Macintosh	2.0
Microsoft Works DB for Windows	3.0, 4.0
Microsoft Works WP for DOS	1.0
Paradox for DOS	2.0 - 4.0
Paradox for Windows	1.0
Q&A Database	Through 2.0
R:Base	R:Base 5000, R:Base System V
Reflex	2.0
SmartWare II DB	1.02

5.3 Email

Program/File Type	Type/Version
Encoded mail messages	MHT, Multi Part Alternative, Multi Part Digest, Multi Part Mixed, Multi Part News Group, Multi Part Signed, TNEF

Program/File Type	Type/Version
Microsoft Outlook Express (EML)	97 - 2007
Microsoft Outlook Forms Template (OFT)	97 - 2007
Microsoft Outlook (MSG)	97 - 2007
Microsoft Outlook (OST)	97 - 2007
Microsoft Outlook (PST)	97 - 2007
Microsoft Outlook PST (Mac)	2001
IBM Lotus Notes Domino XML Language DXL	8.5
IBM Lotus Notes NSF (File ID only)	7.x, 8.x

5.4 Presentation

Program/File Type	Type/Version
Corel Presentations	6.0 - X3
Harvard Graphics Presentation DOS	3.0
IBM Lotus Symphony Presentations	1.x
Lotus Freelance	1.0 - Millennium 9.6
Lotus Freelance for OS/3	2
Lotus Freelance for Windows	95, 97
Microsoft PowerPoint for Macintosh	4.0 - 2008

Program/File Type	Type/Version
Microsoft PowerPoint for Windows	3.0 – 2007
Novell Presentations	3.0, 7.0
OpenOffice Impress	1.1, 2.0
StarOffice Impress	5.2 - 8.0
WordPerfect Presentations	

5.5 Images

Program/File Type	Type/Version
CALS Raster (GP4)	Type I-II
Computer Graphics Metafile	ANSI, CALS, NIST
Encapsulated PostScript (EPS)	TIFF Header only
GEM Image (Bitmap)	
Graphics Interchange Format (GIF)	
IBM Graphics Data Format (GDF)	1.0
IBM Picture Interchange Format	1.0
JBIG2	Graphic Embeddings in PDF
JFIF (JPEG not in TIFF format)	
JPEG	
JPEG 2000	JP2

Program/File Type	Type/Version
Kodak Flash Pix	
Kodak Photo CD	1.0
Lotus PIC	
Lotus Snapshot	
Macintosh PICT	BMP only
Macintosh PICT2	BMP only
MacPaint	
Microsoft Windows Bitmap	
Microsoft Windows Cursor	
Microsoft Windows Icon	
OS/2 Bitmap	
OS/2 Warp Bitmap	
Paint Shop Pro (Win32 only)	5.0, 6.0
PC Paintbrush (PCX)	
PC Paintbrush DCX (multi-page PCX)	
Portable Bitmap (PBM)	
Portable Graymap PGM	
Portable Network Graphics (PNG)	

Program/File Type	Type/Version
Portable Pixmap (PPM)	
Progressive JPEG	
StarOffice Draw	6.x - 8.0
Sun Raster	
TIF	Group 5, Group 6
TIFF CCITT	Group 3, Group 4
TruVision TGA (Targa)	2.0
WBMP wireless graphics format	
Word Perfect Graphics	1.0
X-Windows Bitmap	x10 compatible
X-Windows Dump	x10 compatible
X-Windows Pixmap	x10 compatible
WordPerfect Graphics	2.0 – 10.0

5.6 Spreadsheet

Program/File Type	Type/Version
Enable Spreadsheet	3.0 - 4.5
First Choice SS	Through 3.0
Framework SS	3.0

Program/File Type	Type/Version
IBM Lotus Symphony Spreadsheets	1.x
Lotus 1-2-3	Through Millennium 9.6
Lotus 1-2-3 Charts (DOS and Windows)	Through 5.0
Lotus 1-2-3 for OS/2	2.0
Microsoft Excel Charts	2.x - 2007
Microsoft Excel for Macintosh	98 – 2008
Microsoft Excel for Windows	3.0 - 2007
Microsoft Excel for Windows (<i>File ID only</i>)	2007 Binary
Microsoft Works SS for DOS	2.0
Microsoft Works SS for Macintosh	2.0
Microsoft Works SS for Windows	3.0, 4.0
Multiplan	4.0
Novell PerfectWorks Spreadsheet	2.0
OpenOffice Calc	1.1, 2.0
PFS: Plan	1.0
QuattroPro for DOS	Through 5.0
QuattroPro for Windows	Through X3

Program/File Type	Type/Version
SmartWare Spreadsheet	
SmartWare II SS	1.02
StarOffice Calc	5.2 - 8.0
SuperCalc	5.0
Symphony	Through 2.0
VP-Planner	1.0

5.7 Text

Program/File Type	Type/Version
ANSI Text	7 and 8 bit
ASCII Text	7 and 8 bit
DOS character set	
EBCDIC	
HTML (CSS rendering not supported)	1.0 – 4.0
IBM DCA/RFT	
Macintosh character set	
Rich Text Format (RTF)	
Unicode Text	3.0, 4.0
UTF-8	

Program/File Type	Type/Version
Wireless Markup Language	
XHTML	1.0
XML (<i>text only</i>)	

5.8 Vector Image

Program/File Type	Type/Version
Adobe Illustrator	4.0 – 7.0, 9.0
Adobe Illustrator (<i>XMP only</i>)	11 – 13 (CS 1-3)
Adobe InDesign (<i>XMP only</i>)	3.0 – 5.0 (CS 1-3)
Adobe InDesign Interchange (<i>XMP only</i>)	
Adobe PDF	1.0 – 1.7 (Acrobat 1-9)
Adobe Photoshop (<i>XMP only</i>)	8.0 – 10.0 (CS 1-3)
Adobe Photoshop	4.0
Ami Draw	SDW
AutoCAD Drawing	2.5, 2.6, 9.0-14.0, 2000i - 2007
AutoShade Rendering	2
Corel Draw	2.0-9.0
Corel Draw Clipart	5.0, 7.0

Program/File Type	Type/Version
Enhanced Metafile (EMF)	
Escher Graphics	
FrameMaker Graphics (FMV)	3.0 – 5.0
Gem File (Vector)	
Harvard Graphics Chart DOS	2.0, 3.0
Harvard Graphics for Windows	
HP Graphics Language	2.0
IGES Drawing	5.1, 5.2, 5.3
Micrografx Designer	Version 6
Micrografx Designer	Through 3.1
Micrografx Draw	Through 4.0
Microsoft XPS (Text Only)	
Novell PerfectWorks Draw	2.0
OpenOffice Draw	1.1 – 3.0
Visio	5.0 - 2007
Visio (<i>Page Preview mode only WMF/EMF</i>)	4
Visio XML VSX (File ID only)	2007

Program/File Type	Type/Version
Windows Metafile	

5.9 Word Processing

Program/File Type	Type/Version
Adobe FrameMaker (<i>MIF only</i>)	3.0 - 6.0
Adobe Illustrator Postscript	Level 2
Ami	
Ami Pro for OS2	
Ami Pro for Windows	2.0, 3.0
Adobe Illustrator Postscript Ami	Level 2
Ami Pro for OS2	
Ami Pro for Windows	2.0, 3.0
DEC DX	Through 4.0
DEC DX Plus	4.0, 4.1
Enable Word Processor	3.0 - 4.5
First Choice WP	1.0, 3.0
Framework WP	3.0
Hangul	97 - 2007
IBM DCA/FFT	

Program/File Type	Type/Version
IBM DisplayWrite	2.0-5.0
IBM Writing Assistant	1.01
Ichitaro	5.0, 6.0, 8.0-13.0, 2004
JustWrite	Through 3.0
Legacy	1.1
Lotus Manuscript	Through 2.0
Lotus WordPro	9.7, 96 - Millennium 9.6
Lotus WordPro (non Win32)	97 – Millennium 9.6
MacWrite II	1.1
Mass 11	Through 8.0
Microsoft Publisher (File ID only)	2003 - 2007
Microsoft Word for DOS	4.0 – 6.0
Microsoft Word for Macintosh	4.0-6.0, 98 - 2008
Microsoft Word for Windows	1.0 - 2007
Microsoft Word for Windows	98-J
Microsoft WordPad	
Microsoft Works WP for DOS	2.0
Microsoft Works WP for Macintosh	2.0

Program/File Type	Type/Version
Microsoft Works WP for Windows	3.0, 4.0
Microsoft Write for Windows	1.0 – 3.0
Microsoft Write for Windows MultiMate	2.0, 3.0-3.6, 4.0
MultiMate	Through 4.0
MultiMate Advantage	2.0
Navy DIF	
Nota Bene	3.0
Novell PerfectWorks Word Processor	2.0
OfficeWriter	4.0-6.0
OpenOffice Writer	1.1 - 2.0
PC File Doc	5.0
PFS: Write	A, B
Professional Write for DOS	1.0, 2.0
Professional Write Plus for Windows	1.0
Q&A Write	2.0, 3.0
Samna Word IV	1.0 – 3.0
Samna Word IV+	

Program/File Type	Type/Version
Signature	1.0
SmartWare II WP	1.02
Sprint	1.0
StarOffice Writer	5.2 - 8.0
Total Word	1.2
Wang IWP	Through 2.6
WordMarc Composer	
WordMarc Composer+	
WordMarc Word Processor	
WordPerfect for DOS	4.2
WordPerfect for Macintosh	1.02 - 3.1
WordPerfect for Windows	5.1 – X3
Wordstar 2000 for DOS	1.0 - 3.0
Wordstar for DOS	3.0-7.0
Wordstar for Windows	1.0
XyWrite	Through III+

5.10 Other

Program/File Type	Type/Version
-------------------	--------------

Program/File Type	Type/Version
Microsoft Project (text only)	98 – 2003
Microsoft Project (File ID only)	2007
Microsoft Windows DLL	
Microsoft Windows Executable	
vCalendar	2.1
vCard	2.1
Yahoo! Messenger	6.X, 7.X, 8

6 Disclaimer

This documentation is proprietary information of kCura Corporation and may be modified, altered, or repurposed only in accordance with written consent from kCura.

© 2010. All rights reserved.