



# Command Line Import Manual

v7.3

November 29, 2011

## Contents

---

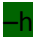
1	Introduction .....	3
2	Integrated Help File.....	3
3	Example Command Line Load.....	4
4	Running Your Import .....	8
5	Common Errors .....	9
6	Appendix A – Encoding Options.....	11
6.1	Encoding Values.....	11
7	Proprietary Rights .....	15

## 1 Introduction

Relativity offers command line importing. This process allows you to initiate an import – with all the features of a load from the Desktop Client – using the Windows Command Line. This document outlines different options and how to correctly configure your command line statement or batch file.

## 2 Integrated Help File

The command line import tool offers a help file, retrievable from the command line. To retrieve the help guide, enter the following:

- C:\Program Files\kCura Corporation\Relativity Desktop Client>kCura.EDDS.WinForms.exe 

The following should be displayed:

### Relativity Desktop Client Command-Line Arguments:

-----

#### **-h or /h**

Display this help page.

#### **: encoding**

Display a list of supported text encoding types on the this machine

The following arguments must be set and in the form specified;

 [flag] [value]

e.g.  "\"Documents and Settings\relativityuser\Desktop\load file.dat"

#### **[-f or /f]:[file path] *required***

Sets the import metadata file path - either native or opticon

#### **[-c or /c]:[case artifact id] *required***

Points the client towards the case to be imported to

#### **[-u or /u]:[relativity username] *required***

Sets the relativity user account that the import will be performed under

#### **[-p or /p]:[relativity password] *required***

Validation for the user account

#### **[-k or /k]:[saved settings kwe or kwi file path] *required***

Saved settings for the run to be performed

**[-m or /m]:[image or native or object or i or n or o] *required***

Sets the import type – image, native, or object - to be run

**[-e or /e]:[code page id]**

Sets the encoding of the load file. This defaults to Windows' default encoding. For a list of active encodings use -h:encoding.

**[-x or /x]:[code page id]**

Sets the encoding of any full text files. This defaults to windows' default encoding. For a list of active encoding code page ids use -h:encoding.

**[-r or /r]:[repository path]**

Sets the destination repository for loaded files. This defaults the case default.

**[-l or /l]:[boolean value]**

Determines if files are actually copied to a relativity repository. Defaults to true.

**[-d or /d]:[folder artifact id]**

Sets the destination folder for the upload. Defaults to the case root folder.

**[-s or /s]:[start line number]**

Sets the starting line number of the load file for the upload. Defaults to 0.

**[-ef or /ef]:[Error line file path]**

Specifies the file path to dump the error line file from the import. If no path is specified, then an error line file is created in the run directory, with an extension matching that of the load file. If this option is not selected then no error line file is created.

**[-er or /er]:[Error report file path]**

Specifies the file path to dump the error report file from the import. If no path is specified, then an error report file is created in the run directory, with a CSV extension. If this option is not selected then no error report file is created.

### 3 Example Command Line Load

The following is an example of how to complete a successful command line import. Each section will build on the previous, adding information to the statement. The added token will be shown **highlighted in green**

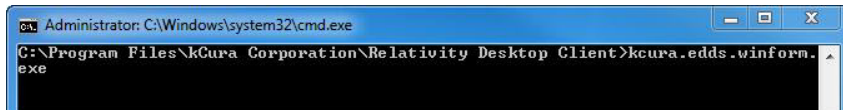
The added value for the token will be shown **highlighted in yellow.**

1. Open Command Line, and browse to Relativity Desktop Client and enter **kCura.EDDS.Winform.exe**. The path is:

[Installation Directory]\kCura Corporation\Relativity Desktop Client>**kCura.EDDS.Winform.exe**

Traditionally, the exact path will be, including the default installation directory:

C:\Program Files\kCura Corporation\Relativity Desktop Client>**kCura.EDDS.Winform.exe**



Command Line Load

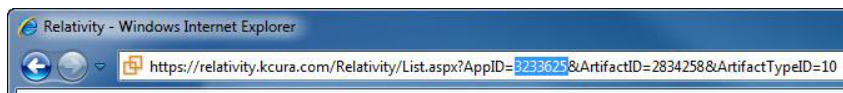
2. Set the file path to the load file - either document level dat or a page level Opticon file.
  - Token = **-f or /f**:**[file path]**
  - **Add to Cmd line:**

PATH>kCura.EDDS.Winform.exe **-f"C:\LOAD\Loadfile.dat"**

3. Add the token for the case artifact id of the target case.
  - Token = **-c or /c**:**[case artifact id]**
  - **Add to cmd line:**

PATH>kCura.EDDS.Winform.exe -f:"C:\LOAD\Loadfile.dat" **-c1250154**

You can find the target case's Artifact ID by browsing to the case in Relativity, and noting the "APPID" listed in the URL. See below:



Artifact ID

4. Set a valid Relativity user account for the load.
  - Token = **-u or /u**:**[relativity username]**
  - **Add to Cmd line:**

PATH>kCura.EDDS.Winform.exe -f:"C:\LOAD\Loadfile.dat" -c:1250154 **-u:relativity.admin@kcura.com**

5. Set the password for the user account
  - Token **-pp or /p**:**[relativity password]**

- Add to Cmd line:

```
PATH>kCura.EDDS.Winform.exe -f:"C:\LOAD\Loadfile.dat" -c:1250154 -
u:relativity.admin@kcura.com -p:password$1
```

6. Specify saved settings for the run to be performed (Field map – kwe file)
  - Token - [k or /k]:[saved settings kwe or kwi file path]



Ensure that the Field map is mapped correctly. The kwe file must be intact for the command line import to complete successfully. Note that the (Append/Overlay) options will be retrieved from this kwe file.

- Add to command line:

```
PATH>kCura.EDDS.Winform.exe -f:"C:\LOAD\Loadfile.dat" -c:1250154 -
u:relativity.admin@kcura.com -p:password$1
-k:"C:\LOAD\loadfile.kwe"
```

7. Set the import type - **image** or **native** or **object** - to be run
  - Token = [i or /m]:[image or native or object or i or n or o]
  - Add to Command line:

```
PATH>kCura.EDDS.Winform.exe -f:"C:\LOAD\Loadfile.dat" -c:1250154 -
u:relativity.admin@kcura.com -p:password$1 -k:"C:\LOAD\loadfile.kwe"
-m:n
```

- Set the encoding of the load file. Token = [e or /e]:[code page id]



For a list of active encoding, enter:

```
C:\Program Files\kCura Corporation\Relativity Desktop
Client>kCura.EDDS.Winform.exe - h:encoding.
```

Each encoding value has a specified code. Enter that code following the token.

The values can also be found in Appendix A of this document.

8. Set the default encoding for full text files. The system auto-detects the encoding of each file. However if the system is unable to determine the coding it will use the selected encoding.

- Token = [x or /x]:[code page id]



For a list of active encoding, enter:

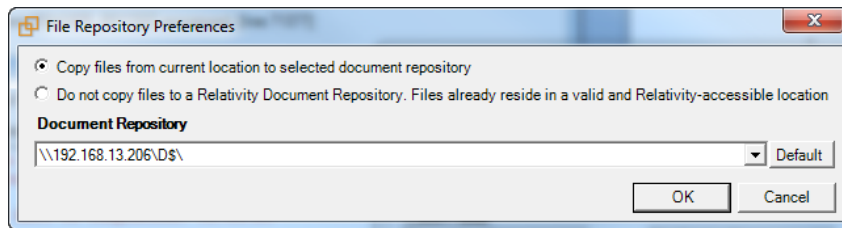
C:\Program Files\kCura Corporation\Relativity Desktop Client>kCura.EDDS.WinForms.exe - h:encoding.

Each encoding value has a specified code. Enter that code following the token.

The values can also be found in Appendix A of this document.

9. Set the destination repository for files being loaded. This defaults the case default.

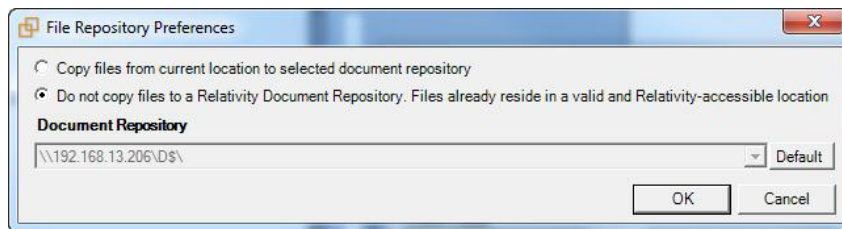
- Token = [r or /r]:[repository path]



File Repository Preferences/Copy Files

Specify if files are actually copied to a Relativity repository. Defaults to true.

- Token = [t or /t]:[boolean value]



File Repository Preferences/Do Not Copy

10. Specify the destination folder for the upload. Defaults to the case root folder.

- Token = [d or /d]:[folder artifact id]



The folder artifact id can only be retrieved through SQL. Open eddsdbo.folder table within a given database to retrieve the folder artifact id by matching it to the name of the folder.

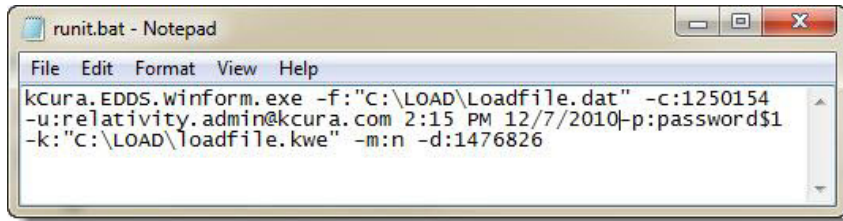
- Add to the command line:

```
PATH>kCura.EDDS.Winform.exe -f:"C:\LOAD\Loadfile.dat" -c:1250154 -  
u:relativity.admin@kcura.com -p: password$1 -  
k:"C:\LOAD\loadfile.kwe" -m:n 1476826
```

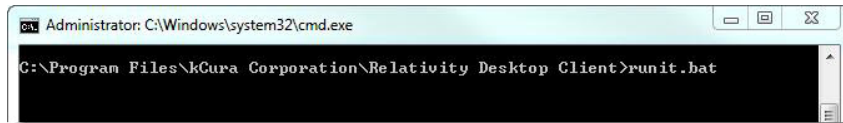
11. Specify the starting line number of the load file for the upload.  
Defaults to 0.
  - Token - [-s or /s]:[start line number]
12. Specify the file path to dump the error line file from the import. If no path is specified, then an error line file is created in the run directory, with an extension matching that of the load file. If this option is not selected then no error line file is created.
  - Token - [ef] or /ef:[Error line file path]
13. Specify the file path to dump the error report file from the import. If no path is specified, then an error report file is created in the run directory, with a CSV extension. If this option is not selected then no error report file is created.
  - Token = [er] or /er:[Error report file path]
14. Once the complete path is entered in the command line, press for the import to begin.

## 4 Running Your Import

- In the installation directory there is a file called runit.bat. If the complete path of the import is inserted in the runit.bat file, the user should be able to call runit.bat in the cmd line from that directory.
- The folder count option is unavailable when running the command line import.



Runit.bat.



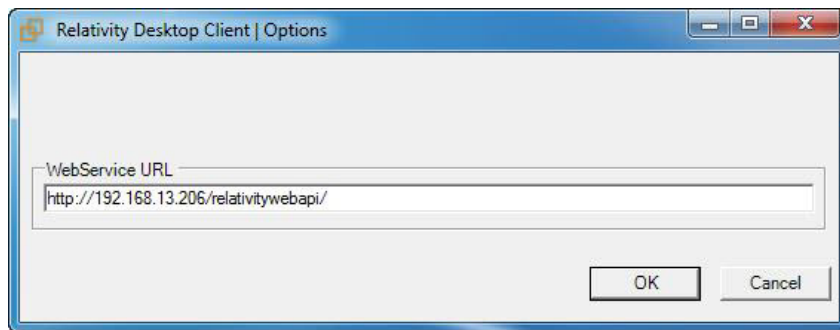
CMD Line

- Once an import has begun, pressing Ctrl C will end the import.
- Clicking on the cmd prompt during an import will pause the import
- Error files will only be generated after the complete IMPORT is complete
  - Line level errors
  - Append/Overlay errors

## 5 Common Errors

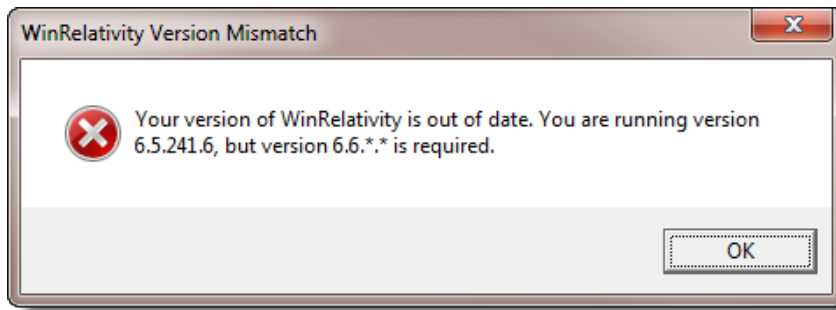
- If the Webservice URL is not entered correctly (mis-spelled or invalid), the following error will be prompted:

ERROR: Invalid credentials specified. Please specify an active Relativity account's username and password



Incorrect Webservice URL

- If a DIFFERENT/valid version's Webservice URL is specified, the following error is prompted:



WinRelativity Version Mismatch

- **If the same version or desktop client is being used , but the Web Service URL is pointing to a different environment, the following will be prompted:**

```
-----  
ERROR: The case specified by the following ID does not exist: 1250154  
Use kCura.EDDS.WinForms.exe -h for help  
-----
```

Nonexistent Case Error

- *"1250154" was the specified CASE ArtifactID that is invalid because the Web Service URL was pointing to a differently Relativity environment.*
- If there is an error/invalid entry on a line level within an import file, the following error will be prompted:

```
[Line Error] [Line 2] - One of the files specified for this document does not exist  
- There are an unequal number of columns on this line compared to the header line
```

Invalid Entry Error

- The created Error files `(-ef,-er)` will log the error above as well.
- If performing an APPEND mode import and these files already exist in the case, the following error will be prompted:

```
[Line Error] [Line 4] - A document with identifier ron_AS000005 already exists i
n the system
[2009-04-27 10:51:27]
[Line Error] [Line 5] - A document with identifier ron_EN000001 already exists i
n the system
```

Pre-existing File Error

## 6 Appendix A – Encoding Options

The following is the list of encodings used for:

- Load files - [-e or /e]:[code page id]
- Full text files [-x or /x]:[code page id]



For a list of active encoding, enter:

```
C:\Program Files\kCura Corporation\Relativity Desktop
Client>kCura.EDDS.Winform.exe - h:encoding.
```

Each encoding value has a specified code. Enter that code following the token.

The values can also be found in Appendix A of this document.

### 6.1 Encoding Values

Code Page ID Entry	Encoding Value
1256	Arabic (Windows)
775	Baltic (DOS)
28594	Baltic (ISO)
1257	Baltic (Windows)
852	Central European (DOS)
28592	Central European (ISO)
10029	Central European (Mac)

Code Page ID Entry	Encoding Value
1250	Central European (Windows)
936	Chinese Simplified (GB2312)
52936	Chinese Simplified (HZ)
950	Chinese Traditional (Big5)
10082	Croatian (Mac)
866	Cyrillic (DOS)
28595	Cyrillic (ISO)
20866	Cyrillic (KOI8-R)
21866	Cyrillic (KOI8-U)
10007	Cyrillic (Mac)
1251	Cyrillic (Windows)
863	French Canadian (DOS)
737	Greek (DOS)
28597	Greek (ISO)
10006	Greek (Mac)
1253	Greek (Windows)
869	Greek, Modern (DOS)
1255	Hebrew (Windows)

Code Page ID Entry	Encoding Value
875	IBM EBCDIC (Greek Modern)
500	IBM EBCDIC (International)
1026	IBM EBCDIC (Turkish Latin-5)
37	IBM EBCDIC (US-Canada)
861	Icelandic (DOS)
10079	Icelandic (Mac)
51932	Japanese (EUC)
50220	Japanese (JIS)
50222	Japanese (JIS-Allow 1 byte Kana - SO/SI)
50221	Japanese (JIS-Allow 1 byte Kana)
932	Japanese (Shift-JIS)
949	Korean
50225	Korean (ISO)
865	Nordic (DOS)
855	OEM Cyrillic
437	OEM United States
860	Portuguese (DOS)
10010	Romanian (Mac)

Code Page ID Entry	Encoding Value
<b>20261</b>	T.61
<b>874</b>	Thai (Windows)
<b>857</b>	Turkish (DOS)
<b>28599</b>	Turkish (ISO)
<b>10081</b>	Turkish (Mac)
<b>1254</b>	Turkish (Windows)
<b>10017</b>	Ukrainian (Mac)
<b>1200</b>	Unicode
<b>1201</b>	Unicode (Big-Endian)
<b>65000</b>	Unicode (UTF-7)
<b>65001</b>	Unicode (UTF-8)
<b>1258</b>	Vietnamese (Windows)
<b>850</b>	Western European (DOS)
<b>28591</b>	Western European (ISO)
<b>10000</b>	Western European (Mac)
<b>1252</b>	Western European (Windows)

Encoding Values

## 7 Proprietary Rights

This documentation (“**Documentation**”) and the software to which it relates (“**Software**”) belongs to kCura Corporation and/or kCura’s third party software vendors. kCura grants written license agreements which contain restrictions. All parties accessing the Documentation or Software must: respect proprietary rights of kCura and third parties; comply with your organization’s license agreement, including but not limited to license restrictions on use, copying, modifications, reverse engineering, and derivative products; and refrain from any misuse or misappropriation of this Documentation or Software in whole or in part. The Software and Documentation is protected by the **Copyright Act of 1976**, as amended, and the Software code is protected by the **Illinois Trade Secrets Act**. Violations can involve substantial civil liabilities, exemplary damages, and criminal penalties, including fines and possible imprisonment.

**©2011. kCura Corporation. All rights reserved. Relativity® and kCura® are registered trademarks of kCura Corporation.**